







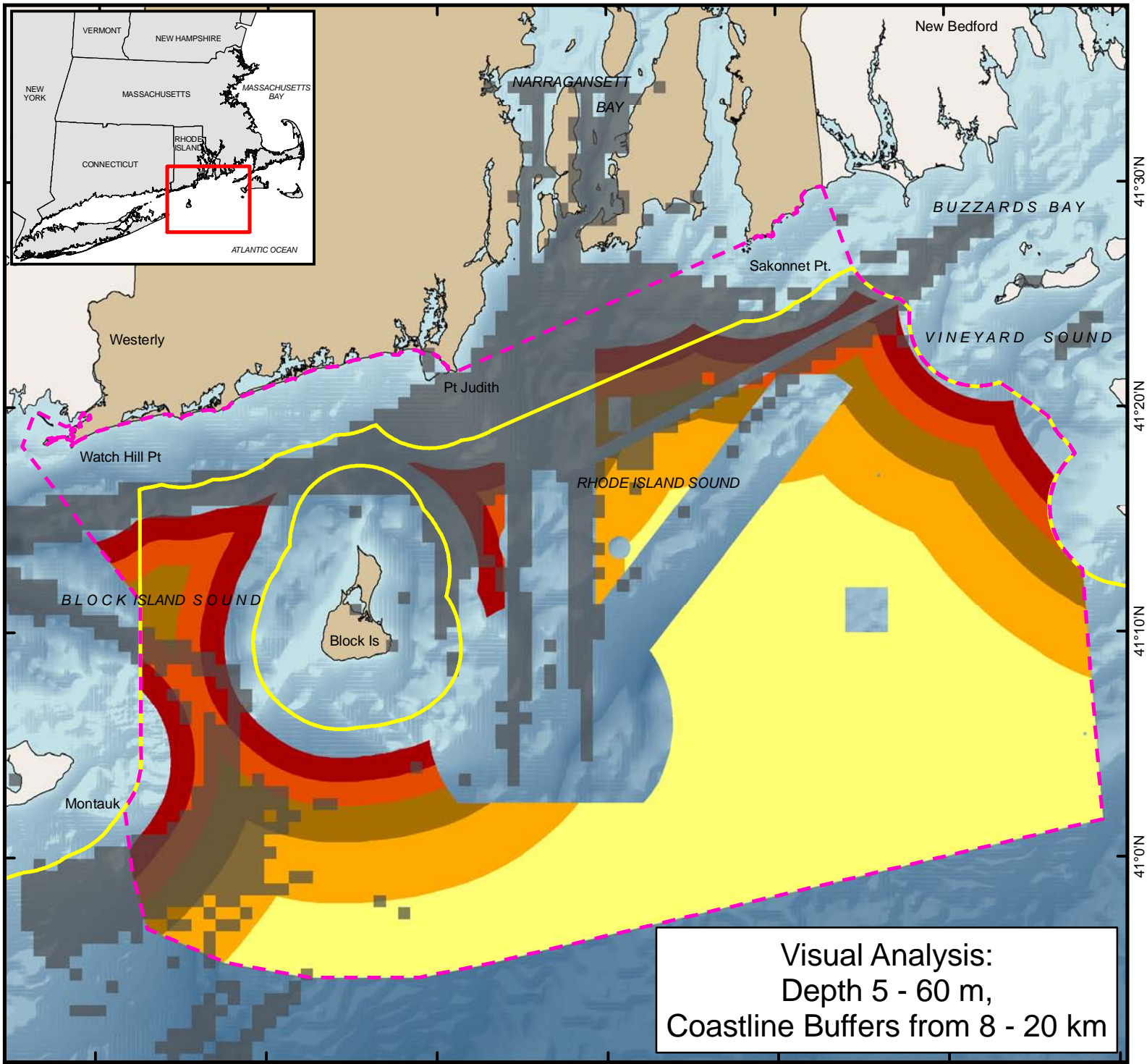


Rhode Island Ocean Special Area Management Plan (SAMP)

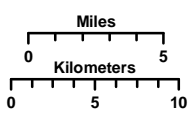
71°50'W 71°40'W 71°30'W 71°20'W 71°10'W 71°0'W 70°50'W

Map Key

-  Proposed Ocean Study Area
-  State/Federal Waters Separation
-  AIS Vessel Traffic
-  20 Kilometer Buffer
-  15 Kilometer Buffer
-  12 Kilometer Buffer
-  10 Kilometer Buffer
-  8 Kilometer Buffer



41°30'N
41°20'N
41°10'N
41°0'N



Coordinate System:
Projection: RI Stateplane
Units: Feet
FIPS Zone: 3800
Datum: NAD83

For Project Background Information:
<http://seagrant.gso.uri.edu/oceansamp>

For Project Map and Data Products:
http://www.narrbay.org/d_projects/oceansamp



Visual Analysis:
Depth 5 - 60 m,
Coastline Buffers from 8 - 20 km